

Quotation Name :	AuckLand studio house	Sales Person :	Fox Ren
Building Name:		Studio house	
Building Quantity:	2	Building Total Area(m²):	36

1. Project Information

1.1 Building Parameters

No.		Quantity	Unit
1.	Building Length	6.000	m
2.	Building Width	6.000	m
3.	Eave Elevation	2.440	m
4.	Main Slope	8.000	°
5.	1st Floor Wall Hight	2.440	m
6.	1st Floor Thickness	0.200	m

1.2 Design Standard

1. STRUCTURAL DESIGN ACTIONS (AS/NZS 1170:2002)
2. WIND LOADS FOR HOUSEING (AS 4055-2006)
3. COLD-FORMED STEEL STRUCTURES (AS/NZS 4600:2005)
4. NASH Standard Residential and Low rise Steel Framing Part 1: Design Criteria 2005

1.3 Climate Information

	Loading Value		Unit
Wind Load :	42m/s	3S time interval	500 years return period
Seismic Condition:	N/A	Snow Load :	N/A

1.4 Building Requirements

	Insulation Value R (m2-K/W)		
Roof	3.50	Raised Ground Floor	1.60
Ext. walls	1.90	Partition Wall	N/A

2. Quotation Scope

2.1 Structure system:

Light gauge steel framing system: Roof Truss, 550MPa, AZ150; Tophat Batten, 550MPa, AZ150
 Wall framing, G550, Zinalume AZ150
 Cold formed C section for floor joist, 350MPa, Z275
 Clips & Brackets
 Screws;

2.2 Roof System

Roof Cladding: Corrugated tiles, COLORBOND, AZ150; offwhite
 Soffit Panel: Single layer, 8mm, Fiber cement board
 Ceiling panel: Single layer, 12mm, General Plasterboard (for general area);
 Insulation (for Roof sloped surface): 75mm, 16kg/m3 Insulation batt, faced with foil;
 Insulation (for Ceiling): 75mm, 16kg/m3 Insulation batt, unfaced;
 Rain System: NOVALINE Fascia, Clean COLORBOND XRW, Zinalume AZ150
 QUAD Gutter, Clean COLORBOND XRW, Zinalume AZ150
 Downpipe, Clean COLORBOND XRW, Zinalume AZ150
 Other: Include connection bolts and fasteners

2.3 Wall System

Exterior Wall Materials: 7.5mm fiber cement horizontal siding system+Vapor Barrier+12mmOSB Board
 Interior Wall Cladding: Single layer, 12mm, General Plasterboard (for general area);
 Single layer, 8mm, fiber cement board (for wet area:bathroom);
 Insulation (External Wall): 75mm, 16kg/m3 Insulation batt, faced with foil;
 Insulation (Internal Wall): 50mm, 16kg/m3 Insulation batt, unfaced;
 Water proof material: Butyl tape on the bottom of ground floor walls;
 Other: Include connection bolts and fasteners;

2.4 Floor System

Floor Plant: 18mm OSB board

Floor Insulation	Aluminium Foil Sarking	similar to aircell insulation
Other	Include connection bolts and fasteners;	
2.6 Windows & doors		
Internal Doors:	Medium density fiberboard flush door, with hinge and handle lockset, without door closer;	
Windows:	Aluminum windows, 5+6+5 (tempered only for glaze area more than 1.5m ²), aluminum flange, invisible screen; Sliding windows could use sliding screen;	AS/NZS Certified Glass
Sliding Door:	Aluminum sliding door, 5+6+5 tempered glaze	

3 Transportation term:

FOB Shanghai / FOB XIAMEN(container loading, local charges included)

4 Notes

1. Excluding any installation fees.
2. Excluding masonry, concrete, embeded plate or embeded bolt.
3. Excluding interior decoration, fittings, plumbing or electricity.
4. Any questions feel free to contact

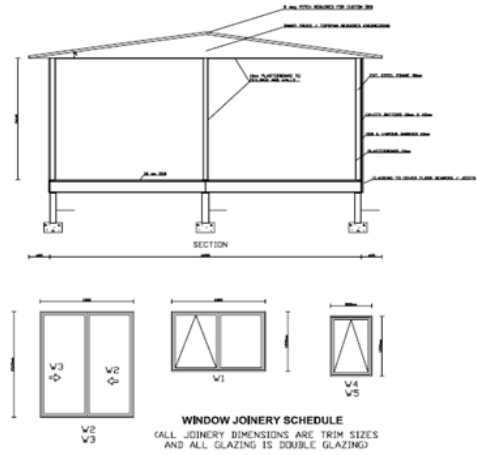
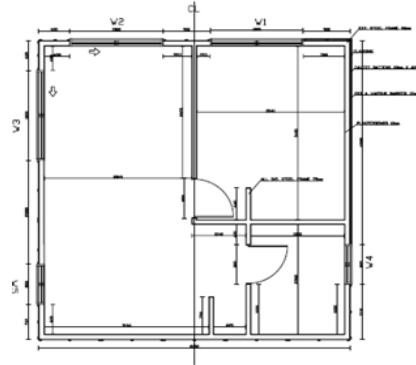
www.SmartecBuilding.com	
Skype:	Foxinjxust
Mobile:	(+86) 186 1680 0592
Email:	Fox@Jxust.Com
	Sales@smartecbuilding.com

Packing and shipping for studio house project



Application: Granny flat
Holiday house, Studio, Motel

Floor area: 36 sqm
elevated floor system
QTY: 2 units



Half of 40hc container is filled with prefabricated wall panels

Another half is all other flat pack materials on a steel skid to achieve shipping damage free requirement



Screws and accessories in boxes at bottom of timber cage packing



Colorbond Downpipe & elbow connector



Boards, claddings, OSB, windows and doors, RWG, etc. All flat pack materials on the skid





ready to slide into container

fill extra space with fiberglass insulation



back to the truck

container ready to go



Site Construction Report From Client

40HC Container arrival

the client bought a used 40hc container as warehouse on site



Floor system is elevated, joist & bearers supplied by us, Piers by local contractor.



Wall panels prefabricated in china factory, OSB, insulation prefitted.

Simple and fast site management



Housewrap paper supplied by us

Timber Battens

Colorbond Roofing done



Sliding doors (issue: lock was not equipped)



Interior plasterboard installation



Exterior finish: fibercement siding



gutters installed, downpipes ready to install

36sqm house
Colorbond Custom Orb roof
Bluescope steel framing



www.smartecbuilding.com

Skype: Foxinjxust

Mobile: (+86) 186 1680 0592

Email: Fox@Jxust.Com

Sales@smartecbuilding.com